

# INTRAsystems



INTRAsystems, 14 Headlands Business Park, Salisbury Road, Blashford, Ringwood, United Kingdom, BH24 3PB

[www.intrasystems.co.uk](http://www.intrasystems.co.uk)

Bryony Light, Tel: + ( ) 01425 472000, [bryony.light@intrasystems.co.uk](mailto:bryony.light@intrasystems.co.uk)

Enquiries Enquiries, Tel: +44 (0)1425 472000, [info@intrasystems.co.uk](mailto:info@intrasystems.co.uk)

---

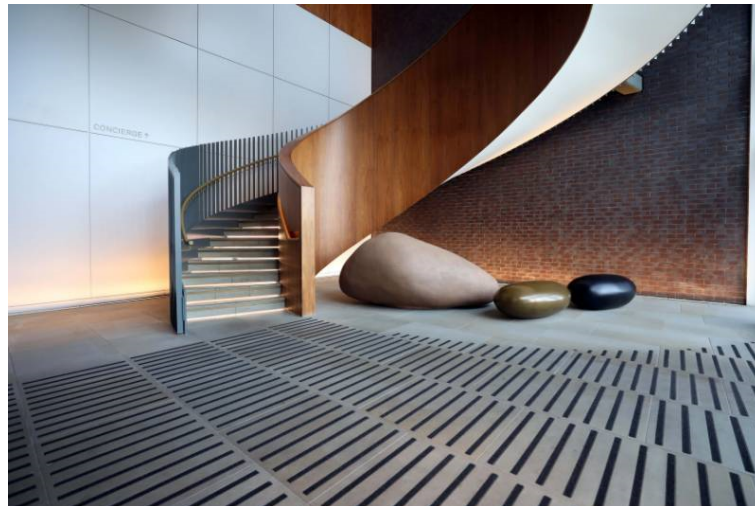
## CPD Overview

---

INTRAsystems supplies discerning architects and interior designers with high performance entrance matting, architectural grilles and creative ceiling products across a variety of sectors including commercial, education, healthcare, leisure, facilities and public spaces.

Established in 1986, we are a family run business, proudly manufacturing in-house from our facility in Hampshire and shipping to sites all over the world. We don't believe in a one-size-fits-all solution. Your designs are unique – so why can't your materials be, too? That's why we provide bespoke solutions, so you'll never have to compromise on design.

If you're looking for a trusted supplier with unrivalled customer service, design-led and functional products, meticulous attention to detail, and who can support you in your continuing professional development, look no further than INTRAsystems. Our core values are Commitment, Honesty, Enthusiasm, Excellence and Respect - affectionately known as CHEER



---

**Available CPD Material (4)**


---



Multiple formats

**The Why and How of Entrance Matting Innovation**

Learn how to specify barrier matting for your building without compromising on design. This seminar will help you to understand the following topics:

- Entrance matting functions and benefits
- Types of entrance matting
- Entrance matting legislation
- Performance ratings and lifecycle
- Design possibilities and innovation

The seminar also offers a Q and A for delegates to address their particular project issues.

This CPD can be delivered to you live and remotely.

Material type: Online Learning, Seminar

RIBA Core Curriculum: **Design, construction and technology**  
**Health, safety and wellbeing**  
**Legal, regulatory and statutory compliance**

Knowledge level: General Awareness

---


**Entrance Matting Design and Specification for Schools, Colleges and Universities**

With medium to heavy traffic levels and frequent intense periods of footfall across multiple entrances, schools, colleges, and universities have some of the busiest entrances of any sector. With most educational projects centrally funded, budget is often limited or very tightly managed. This makes specifying entrance matting for educational establishments some of the most difficult specifications to get right. This article examines the key considerations for educational buildings and provides guidance for specifying commercial entrance matting in an educational setting. By the end of the CPD you should have a greater understanding of:

- The nuances of specifying entrance matting in an education setting
- How to create a full or modified zonal system
- How to write an entrance matting specification that meets both aesthetic and performance requirements

- Sizing, performance ratings and standards

Material type: Article

RIBA Core Curriculum: **Design, construction and technology**

Knowledge level: Microlearning

---



### Entrance Matting for Hospitals and Healthcare

With hygiene and wellness being the highest priority in hospitals and healthcare, entrance matting is your building's first line of defence against dirt and contaminants. This article examines the key considerations for entrance matting specification and provides guidance for specifying commercial entrance matting in a hospital or healthcare setting. By the end of the CPD you should have a greater understanding of:

- The nuances of specifying entrance matting in an hospital or healthcare setting
  - The factors and features that affect performance
  - How to create a zonal system
  - How to write an entrance matting specification that meets both aesthetic and performance requirements
- Essential insights into sizing, performance ratings and standards

Material type: Article  
RIBA Core Curriculum: [Health, safety and wellbeing](#)  
Knowledge level: Microlearning

---



### Entrance Matting Specification and Design Innovation

There are a number of factors to consider to ensure you specify the right barrier matting for your building. This article looks at the factors that affect entrance matting specification, including sizing and legislation, performance ratings, WELL, BREEAM and LEED guidance and how entrance matting can be used to enhance your design. It will help you to understand the following topics:

- Entrance matting functions and benefits
- Sizing and the zonal system
- Legislation and sustainability factors
- Entrance matting design possibilities
- Performance ratings and lifecycle

Material type: Article  
RIBA Core Curriculum: [Design, construction and technology](#)  
Knowledge level: Microlearning

---

## Classifications

---

### Subject/Product Areas (CI/SfB)

Finishes

[Floor finishes: carpets > Mats and matting](#)

Fittings

[Circulation fittings, signs, etc. > Entrance mats, accessories](#)

### RIBA Core Curriculum areas

[Design, construction and technology](#)

Knowledge level: *General Awareness*

[Health, safety and wellbeing](#)

Knowledge level: *General Awareness*

[Legal, regulatory and statutory compliance](#)

Knowledge level: *General Awareness*