



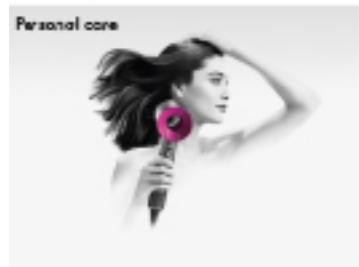
Tetbury Hill, Malmesbury, Wiltshire, SN16 0RP  
[www.dyson.co.uk/forbusiness](http://www.dyson.co.uk/forbusiness)  
Neil Solanki, Tel: +44 (0)7738262604, [specification@dyson.com](mailto:specification@dyson.com)

---

## CPD Overview

---

For technology to have a positive effect, it must work properly. By solving problems and relentlessly innovating, Dyson strive to set new standards for performance and wellbeing in business and leisure environments.



---

## Available CPD Material (6)

---



### Sustainable and Hygienic Washrooms

This seminar will cover:

- Factors to consider when choosing hand drying methods
- Previous market status
- Current market status
- Health, safety and hygiene
- Test methodology and independent research
- Technology
- Cost and sustainability

Material type:

Seminar

RIBA Core Curriculum:

**Design, construction and technology**  
**Sustainable architecture**

Knowledge level:

General Awareness

---



### What have the Romans ever done for us? Public health, well-being and sustainability in the washroom

Public awareness of washing hands to prevent the spread of bacteria and viruses has increased following the Coronavirus Outbreak. This CPD covers the history of public health engineering and how problems in history were solved. It touches on personal hygiene and habits and considerations for washroom design of the future. By the end of the CPD you should have a greater understanding of:

- How public health engineering started and why
- The building regulations applicable to public health engineering and use of BIM
- The potential consequences of poor design/engineering
- What consideration you should give to future washroom design

Material type:

Seminar

RIBA Core Curriculum:

**Design, construction and technology**  
**Health, safety and wellbeing**

Knowledge level:

General Awareness

---



### Eat, Sleep, Work and Repeat: Circadian Disruption and Human Centric Lighting

This CPD is about human-centric lighting, we will go on a journey to understand how humans have evolved to depend on light and how we now understand more about artificial light and its effects on circadian disruption. This CPD will help you to understand the following topics:

- Human evolution, our connection to natural light and darkness
- Natural light versus artificial light
- Human visual sensitivity
- Human centric lighting applications
- The WELL Building Standard for lighting

Material type:

Seminar

RIBA Core Curriculum:

**Design, construction and technology**  
**Health, safety and wellbeing**

Knowledge level:

General Awareness

---



### Hazardous Air: The Importance of Indoor Air Quality

This seminar looks at indoor air quality and the effects of pollution. It will help you to understand the following topics:

- The importance of air quality
- Pollution factors and attitudes towards polluted air around the world
- The particulate content of polluted air
- The causes and effects of poor quality indoor air and implications for health
- How to measure air quality

Material type: Seminar

RIBA Core Curriculum: **Design, construction and technology**  
**Sustainable architecture**

Knowledge level: General Awareness

---



### The Unseen issue with LEDs: The Cause and Effects of Flickering Lighting

This seminar looks at the problem of flickering with LED lighting. It will help you to understand the following topics:

- The causes and effects of flicker
- Why flicker exists with LED lighting technology
- Health issues and occupational hazards caused by flickering lights
- Relevant regulations and standards that apply
- How flicker is measured, existing test methodologies and certifications and what good performance means in terms of flicker

Material type: Seminar

RIBA Core Curriculum: **Design, construction and technology**

Knowledge level: General Awareness

---



### Personalised Workspace: Taking Light to Task

This seminar looks at task lighting and how it can promote wellbeing in the work environment. It will help you to understand the following topics:

- The historic use of task lighting and how this has changed over time
- Specific lighting requirements for task based work
- Lighting standards and criteria that impact on task lighting
- The considerations for lighting specification and how to put guidance into practice
- The growing concern for workplace wellbeing

Material type: Seminar

RIBA Core Curriculum: **Design, construction and technology**

Knowledge level: General Awareness

---

## Classifications

---

### Subject/Product Areas (CI/SfB)

#### Services

- Air conditioning, ventilation > Air conditioning**
- Air conditioning, ventilation > Ventilation systems and ventilators**
- Air conditioning, ventilation > Air treatment systems**
- Lighting > Lighting fittings, luminaires**

#### Fittings

- Sanitary and bathroom fittings > Hand and body driers**

#### Engineering

- Dry room furniture/equipment > Sanitary appliances and fittings**

**RIBA Core Curriculum areas**

**Design, construction and technology**

Knowledge level: *General Awareness*

**Sustainable architecture**

Knowledge level: *General Awareness*

**Health, safety and wellbeing**

Knowledge level: *General Awareness*