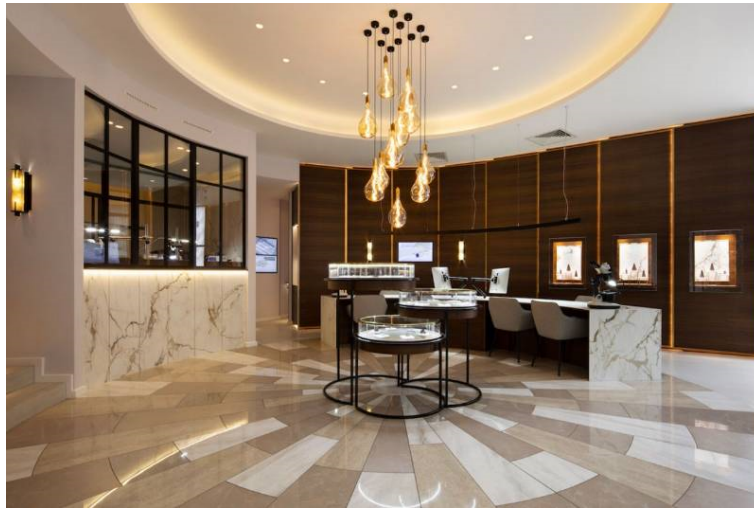


Solus Ceramics Ltd

Unit 1 Cole River Park, 285 Warwick Road, Birmingham, B11 2QX
www.solusceramics.com
Michael Irvine, Tel: +44 (0)121 753 0777, michaelirvine@solusceramics.com



CPD Overview



Available CPD Material (3)



Multiple formats

Moving Earth : Sustainability and Ceramics

Sustainability is a central driver in design. As suppliers, it is our responsibility to help you make informed decisions.

Our Sustainability Manager has created this CPD to give a detailed assessment of the climate crisis and the role that ceramics play in creating sustainable buildings.

Successful participants will be better able to understand the products they are specifying, their carbon profile, and the impact they have.

Material type: Online Learning, Seminar

RIBA Core Curriculum: **Sustainable architecture**

Knowledge level: General Awareness



An Overview of Tile Specification

An overview of issues to consider when specifying ceramic tiles. The seminar covers:

- The different types of tiles available
- Slip resistance values and methods of testing
- Risk assessments and potential hazards
- Tile design layout considerations and light reflectance values
- The Equality Act
- Cleaning and maintenance
- Installation, movement joints and fixing specification
- Security in project specification

Material type: Seminar

RIBA Core Curriculum: **Design, construction and technology**

Knowledge level: General Awareness



Don't Slip Up

Good slip resistance is essential to prevent injuries caused by slips, trips and falls. This presentation looks at the common methods of measuring slip resistance for ceramic tiles. The seminar covers:

- Slip resistance values
- The ramp test and interpretation of results
- The pendulum test and interpretation of results
- The surface roughness test and interpretation of results

Material type: Seminar

RIBA Core Curriculum: **Design, construction and technology**

Knowledge level: General Awareness

Classifications

Subject/Product Areas (CI/SfB)

Finishes

Wall finishes: internal > Ceramic, glass, stone, brick internal wall finishes

Floor finishes: rigid tiles, slabs, mosaic > Tile and slab flooring

Wall finishes: external > Wall cladding tiles

RIBA Core Curriculum areas

Sustainable architecture

Knowledge level: *General Awareness*

Design, construction and technology

Knowledge level: *General Awareness*