

MiTek Industries Ltd



MiTek

MiTek House, Grazebrook Industrial Park, Peartree Lane, Dudley, DY2 0XW

www.mitek.co.uk

Tel: +44 (0)1384 451400, Fax: +44 (0)1384 451411

info@mittek.co.uk

CPD Overview

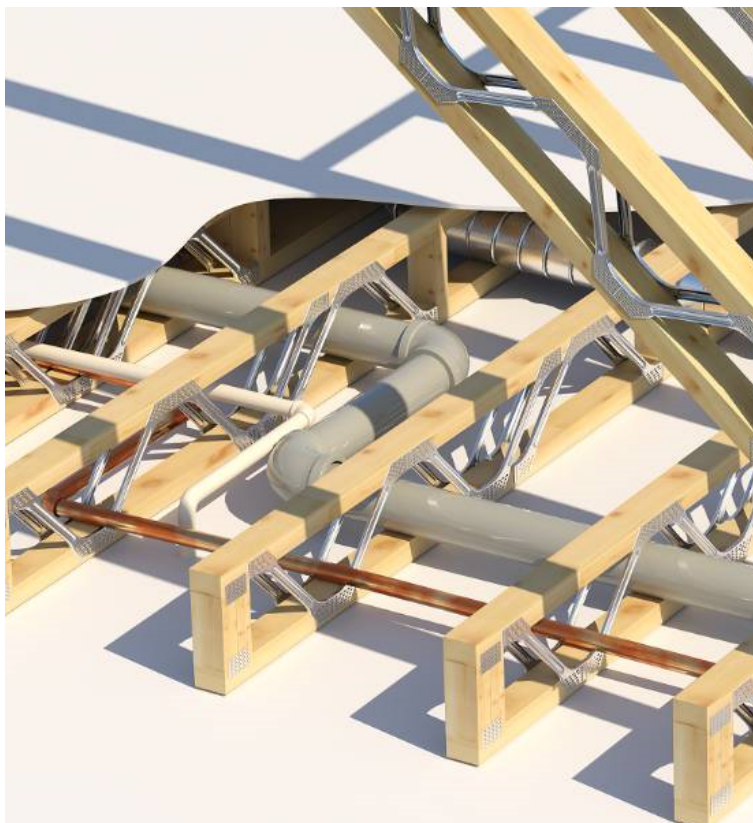
MiTek specialises in the development of engineering software solutions for structural timber engineering and the provision of steel connector products for timber engineered roof and floor systems.

Across the world our customers manufacture roof trusses; open web floor joists such as the popular Posi-Joist; and timber wall framing systems. Roof trusses, or trussed rafters as they are sometimes referred to, are used in the majority of new housing in the UK and Ireland and are increasingly being used in commercial and industrial settings.

Posi-Joist is a metal web joist that provides easy access for the installation and maintenance of the services in a floor zone - perfect if you are installing an MVHR system. Posi-Rafter offers all of the benefits of a Posi-Joist but in a roof application.

Suitable for both flat and pitched roofs, Posi-Rafters are a lightweight, strong and versatile solution. MiTek's software is fully BIM compatible and can produce IFC files for specific projects.

Visit www.mitek.co.uk for more information.



Available CPD Material (1)



Multiple formats

A CPD Guide to Posi-Joists, Posi-Rafters & Metal Webs

This webinar is designed to give you a better understanding of what a metal web joist is and what a metal web rafter is, how to use them and how to install them.

Material type: Online Learning, Seminar

RIBA Core Curriculum: **Design, construction and technology**

Knowledge level: General Awareness

Classifications

Subject/Product Areas (CI/SfB)

Structure

Roofs, including beams > Roof beams and trusses - steel

Roofs, including beams > Roof beams and trusses - timber

RIBA Core Curriculum areas

Design, construction and technology

Knowledge level: *General Awareness*